



SGS MUSCOWPETUNG

ABORIGINAL CONSTRUCTION MONITORING

WEEKLY REPORT

SPREAD 3

AUGUST 5TH TO AUGUST 12TH, 2018

Social and Cultural Features

Field Observation	# of occurrences	Description and Mitigation Measures	Mitigation Status	Further Action Required (Yes/No)
Traditional Use Area (hunting, fishing, gathering, trapping)	0			
Rock Formations (rocks of significance, tipi rings, etc.)	0			
Artifacts	0			
Bones	0			
Potential Gravesites	0			

Environmental Features

Field Observation	# of occurrences	Description and Mitigation Measures	Mitigation Status	Further Action Required (Yes/No)
Medicinal or Cultural Plants	0			
Aquatic Life	0			
Animal Observations or Burrows	0			
Bird Nests	0			
Trees (Red Willow)	0			
Wetlands	0			
Watercourse Crossing	0			

Additional Observations and Summary of Activities or Concerns

This week Indication digs are still ongoing which are the testing for ovalities, anomalies and jeeps. In the final step of testing of the pipe they had sent a smart pig through the line which identifies ovalities, anomalies, and jeeps. This pin points exactly where they are located and will be dug up to be checked and fixed.

Ongoing is the spreading of straw and crimping it into the soil which I had previously mentioned works as a soil erosion method that retains moisture. Also, they are reseeding some the right of way and ditches to their natural state where it is required. Fencing is currently ongoing they are just about finished.

This week they are currently still working on installing valves on certain strategic points of the lines. These valves can isolate certain parts of the line if it was ever required. It takes a lot of work to install a valve. You must cut out the pipe and weld the structural base where the valve will sit. Then they tie in the line to the valve the process of backfilling and compacting begins. This takes time as they backfill approx. a foot of sand at a time then they compact it and perform a compaction test which must meet the requirements. They repeat this process until they meet ground level.

Valve number 9 was just completed along with backfilling and the process that I mentioned above this week. They then jumped to valve 13 which is near completion. Valve 10, 11 and 12 have been dug up and tied in and are currently awaiting backfilling.

Junior monitor Calvin Pooyak found a fossil this week on the right of way. The lead environmentalist noted the location of where it was discovered.



Digging out a anomaly SSKP 379+363

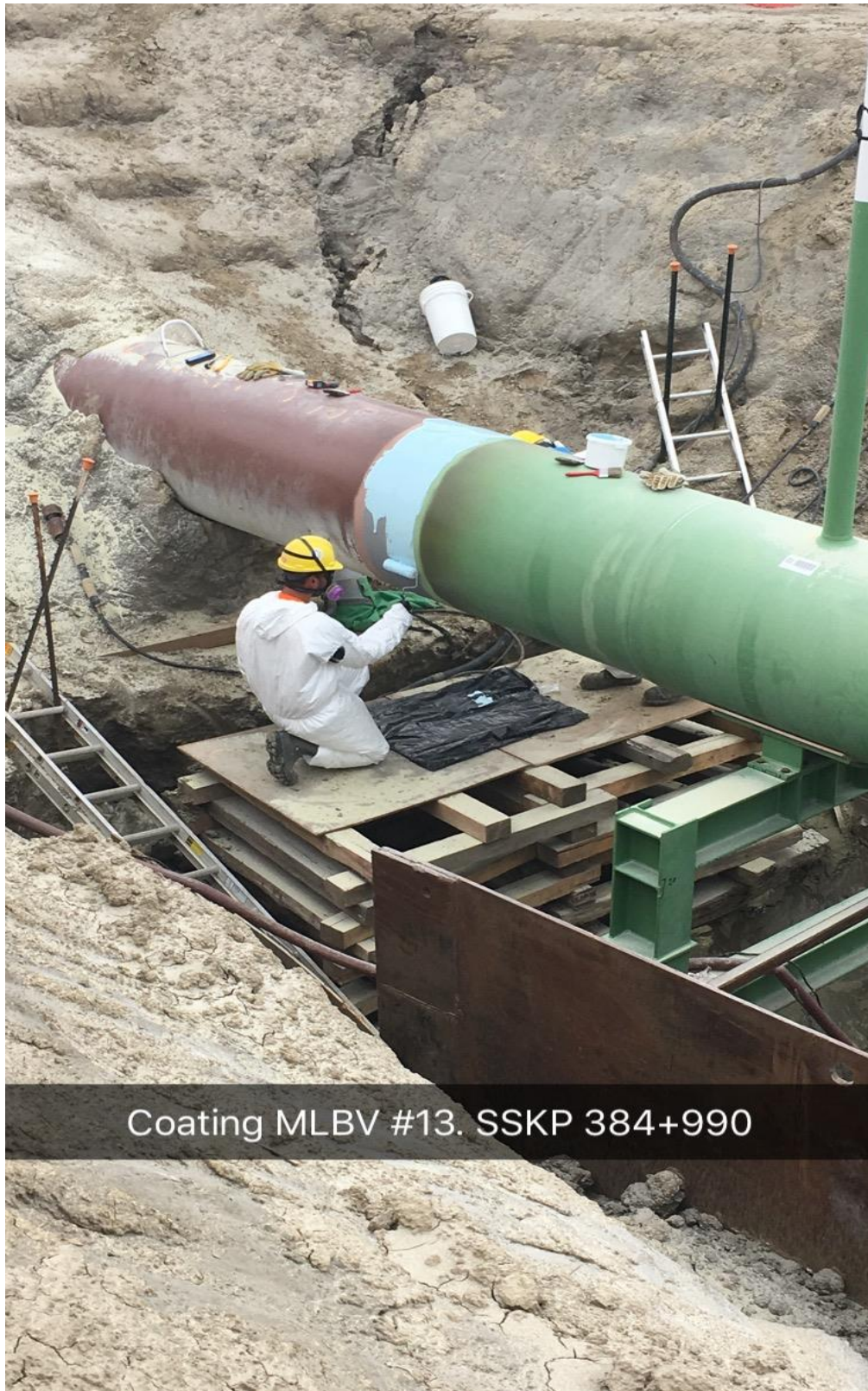




Compacting MLBV #13





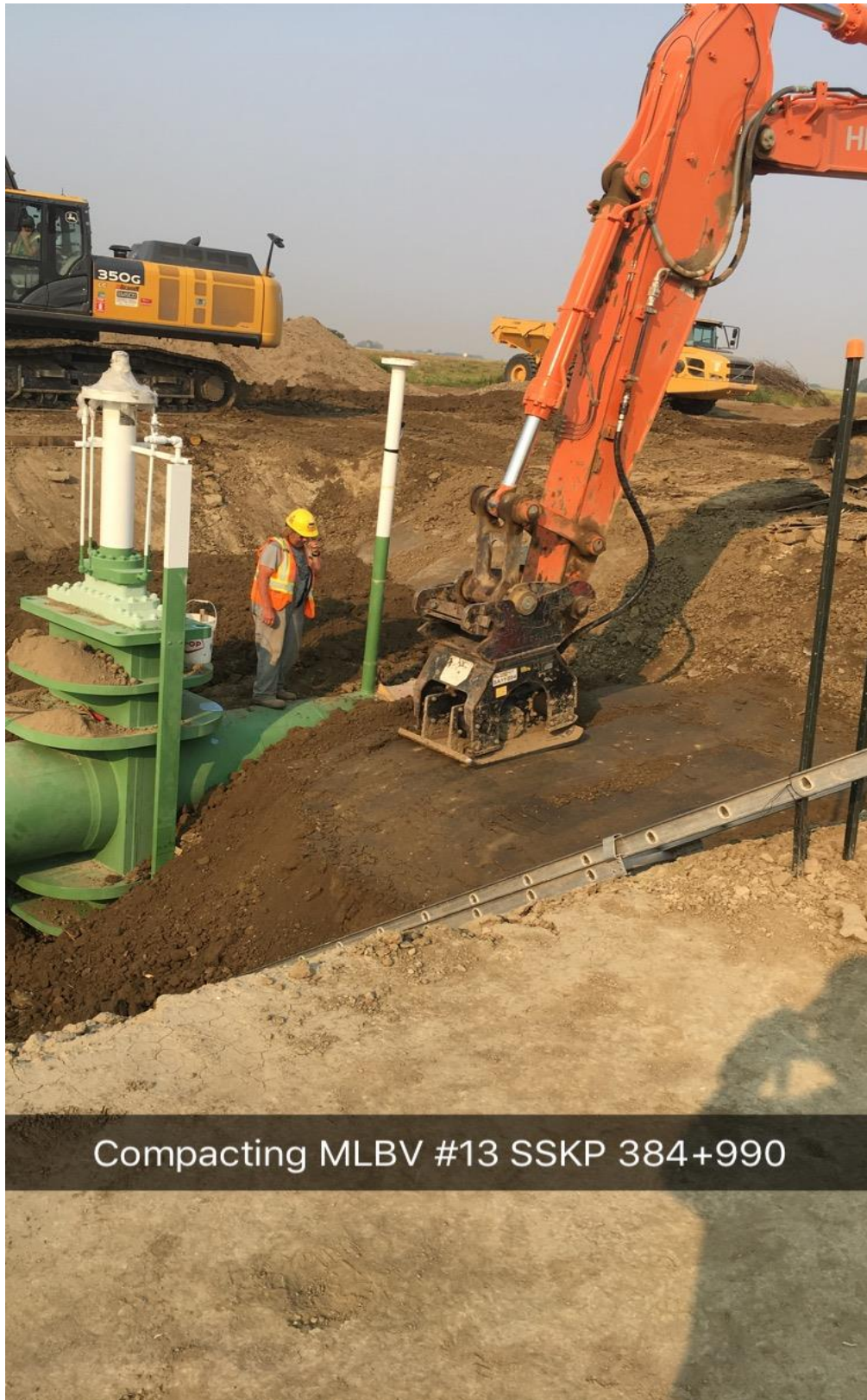








Sand blasting pile caps SSKP 384+990



Compacting MLBV #13 SSKP 384+990



Reseeding right of way



Compacting MLBV #13



Fossil SSKP 407+940

Approvals

Prepared by



Gary Gopher
Senior Construction Monitor

August 13th, 2018

Reviewed by



Joseph Roach
Project Manager

August 15th, 2018

Approved by



Edison Reis, P. Eng
Industrial Quality Manager, Canada

August 15th, 2018